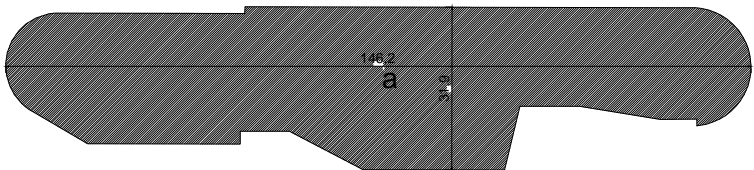
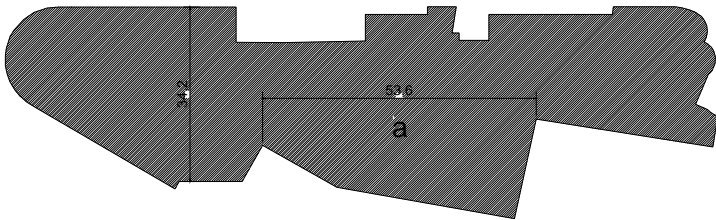


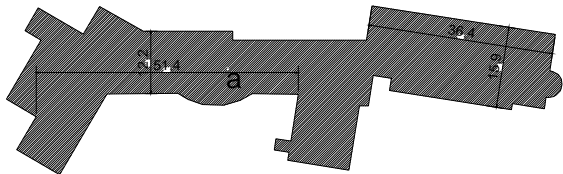
Int.3



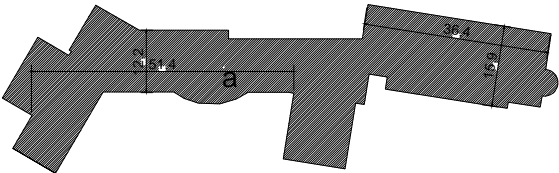
Int.2



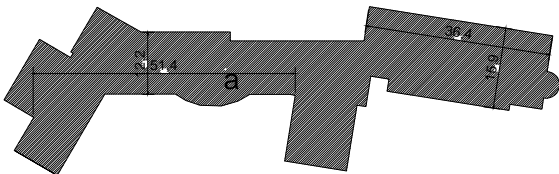
Int.1



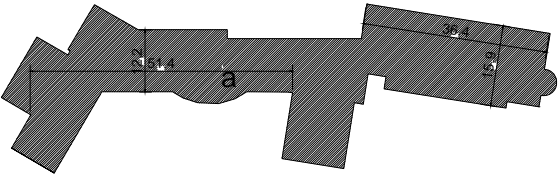
T



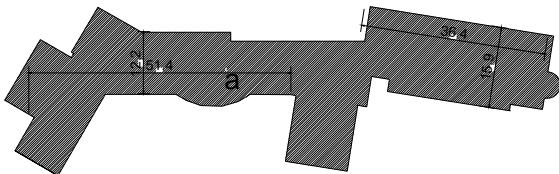
I



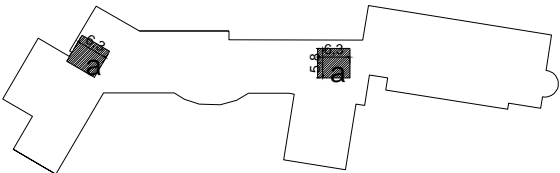
II



III



A



Extr.

Piano	Sa(mq)	Ha(ml)	Vol.(mc)
Int.3	3537,26	3,00	10611,78
Int.2	3574,90	3,00	10724,70
Int.1	3895,32	3,50	13633,62
T	1767,13	3,25	5743,17
I	1707,59	2,95	5037,39
II	1707,59	2,95	5037,39
III	1707,59	2,95	5037,39
A	1707,59	2,95	5037,39
Extr.	73,33*	2,80*	205,32
TOTALE			61.068,15

* misura stimata

REGIONE SARDEGNA
Comune Olbia
Via Tavolara-Via Mameli (no civ.)

DESCRIZIONE INTERVENTO LOTTO 1 - AFFIDAMENTO SERVIZIO DI INGEGNERIA E INDAGINI STRUMENTALI FINALIZZATI ALLA VERIFICA DELLA VULNERABILITA' SISMICA DI CUI ALL'O.P.C.M. 3274/03

DESCRIZIONE ELABORATO CALCOLO SUPERFICI E CUBATURE

N.B. La posizione delle tramezzature interne potrebbe aver subito delle variazioni

C. I. G.
xxxxxxx

ELABORATO N.
Ar. 10