

funivie  
courmayeur  
mont blanc

DETTAGLI TIPO E  
ELEMENTI IDENTITÀ  
ARCHITETTURA

mt 2120  
1750  
VALVENY

mt 2120  
1750  
YOUULA

mt 2120  
1750  
BERTOLINI

mt 2120  
1750  
VALVENY



cabina

edifici funivie

**BERTOLINI | YOULA**

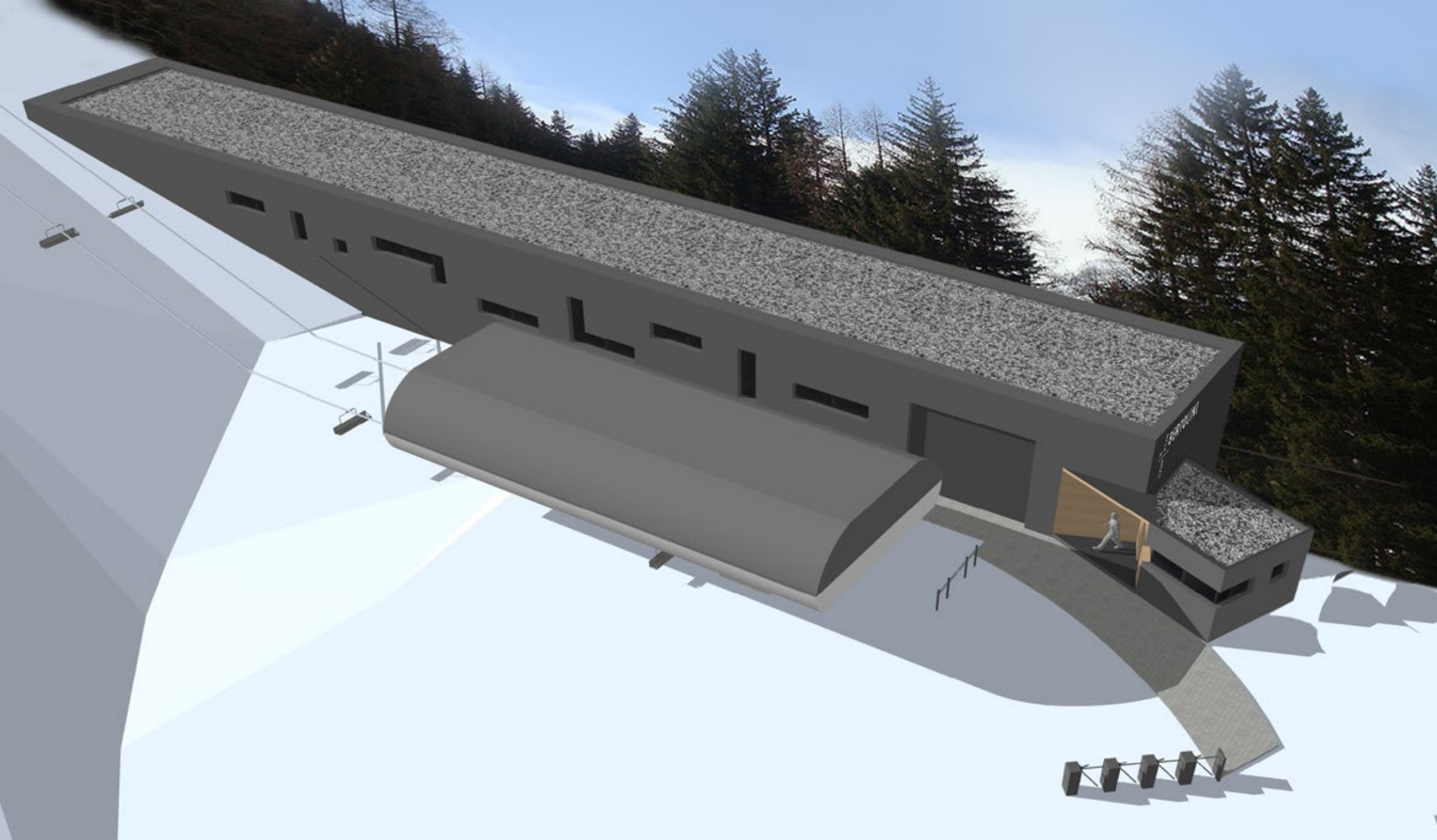


impianto : bertolini MONTE | vista 1





impianto : bertolini VALLE | vista 1











SEGGIOVIA  
PEINDENT

# FUNIVIA VAL VENY

Entrées  
1306 m

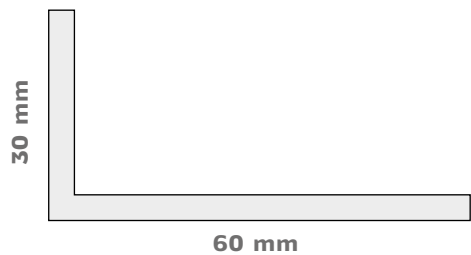
The information display area consists of several digital screens. From left to right: a promotional poster for 'Mont Blanc', a large map of the mountain range, a digital clock displaying '09:16', and a screen with a grid of text, likely a schedule or list of services. Below the screens is a large, textured panel.

# COURMAYEUR MONT BLANC

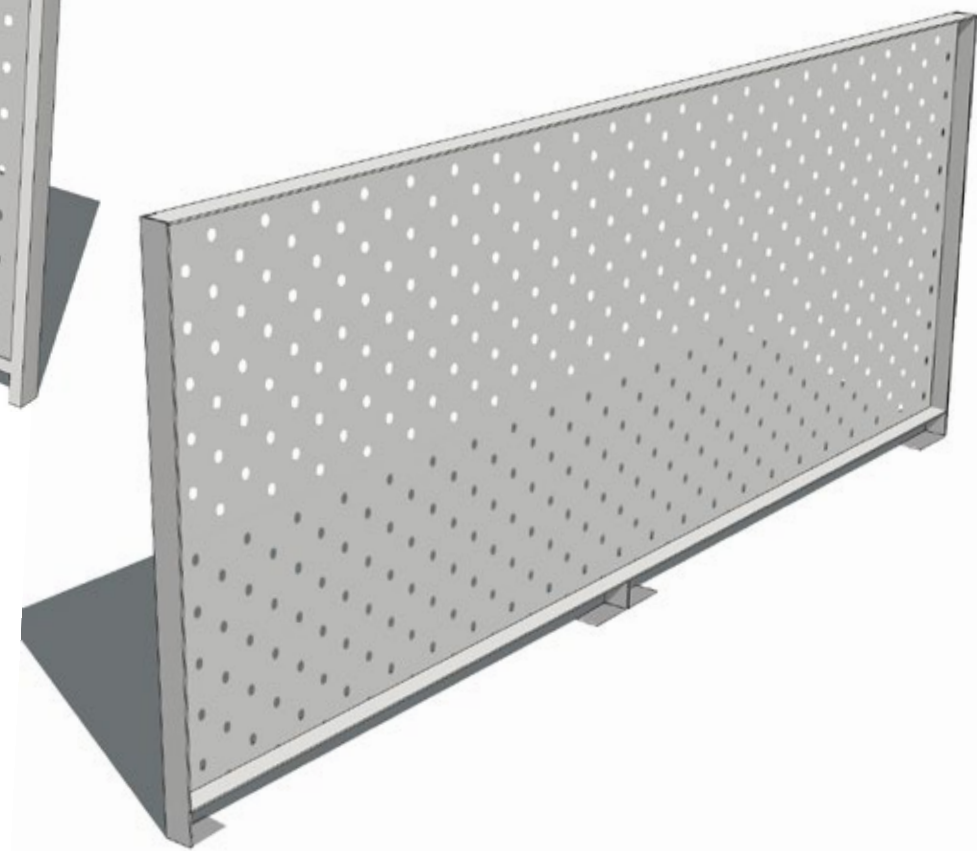
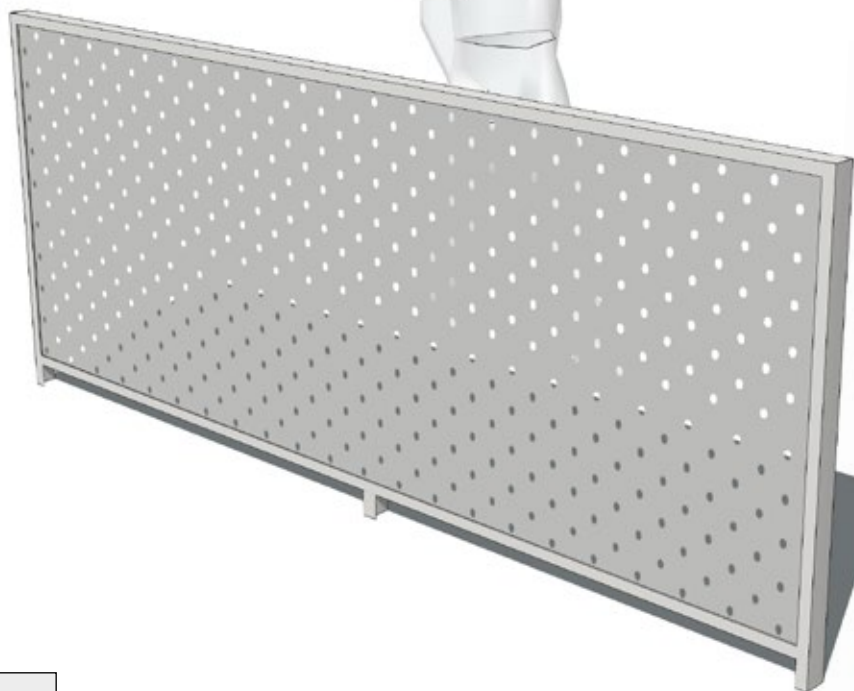
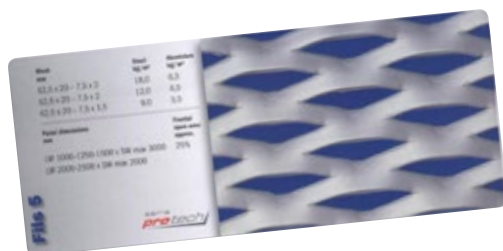
A small information display area featuring a few digital screens, similar in style to the larger one above, providing local information for the Courmayeur Mont Blanc station.



- telaio a L 60x30 in acciaio zincato saldato con zanche a terra imbullonate a vista distanziate a 70 mm (valutare se occorre il profilo più robusto)

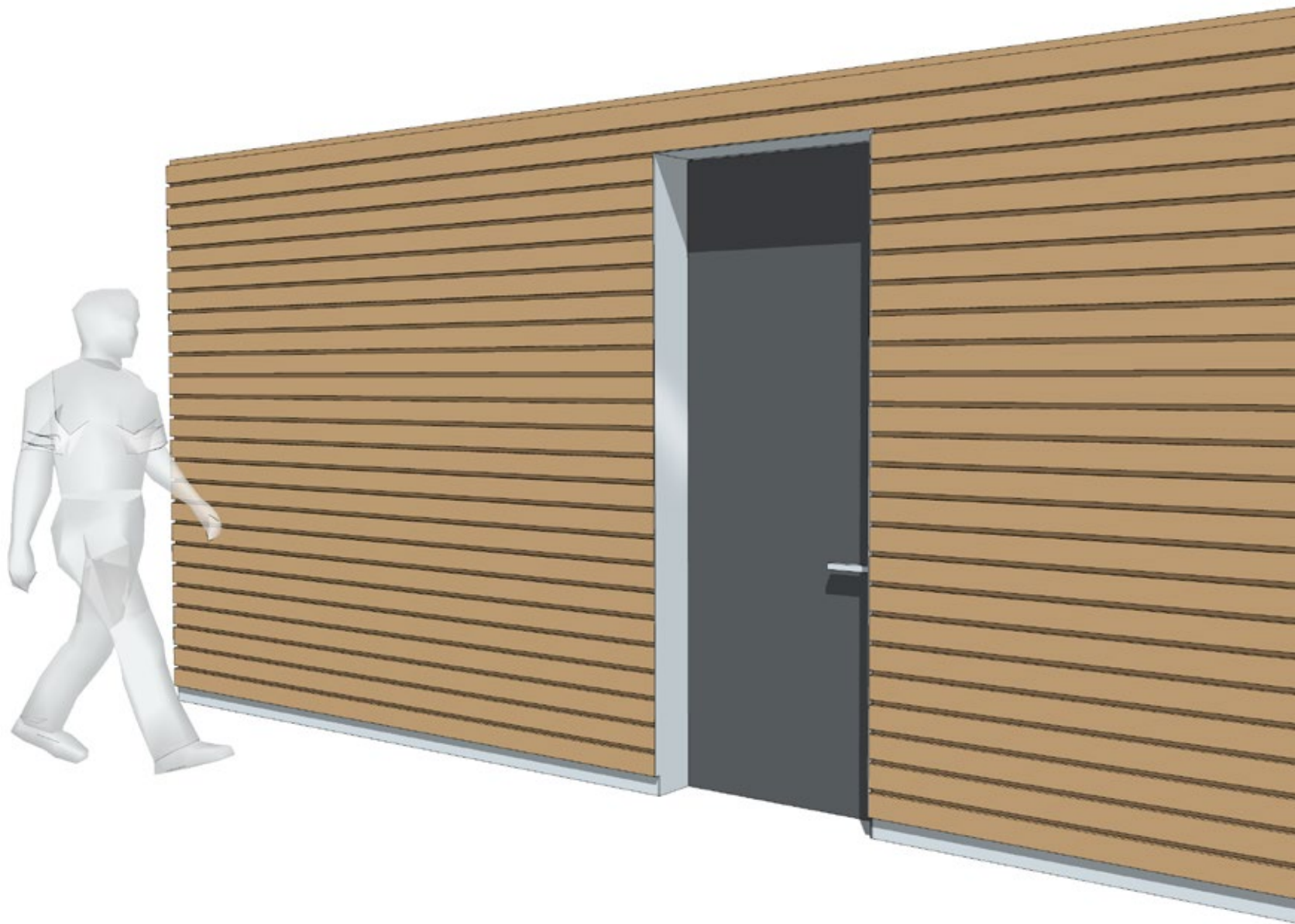
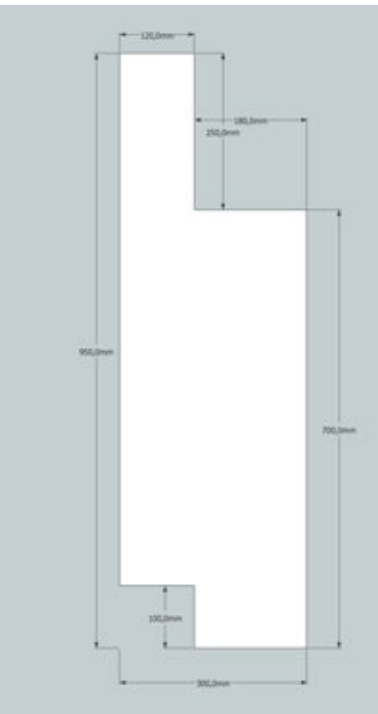


- lamiera stirata come campione di riferimento



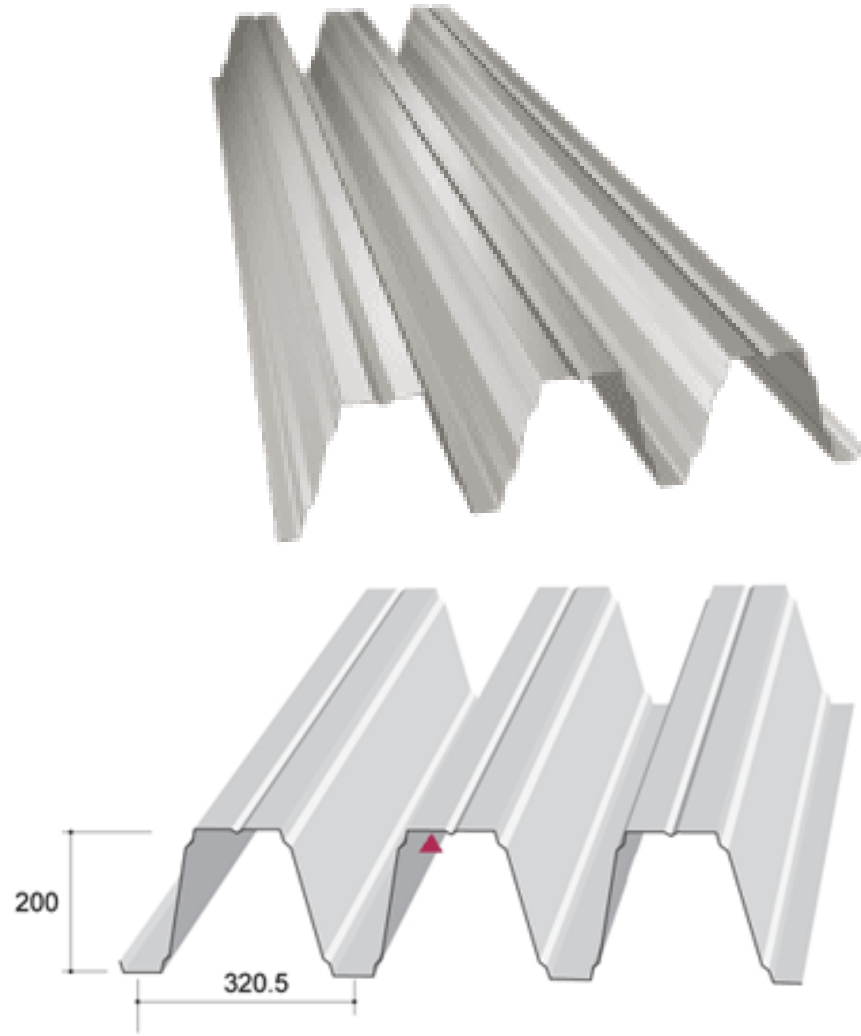
- piastra coprifilo in alluminio (o acciaio zincato) verniciato a polvere da 30/10; sagomatura nella parte bassa per calzare la zoccolatura realizzata nello stesso materiale  
altezza zoccolo 70 mm
- porta colore grigio antracite (di serie)

- profilo doghe (previa verifica da parte del falegname)

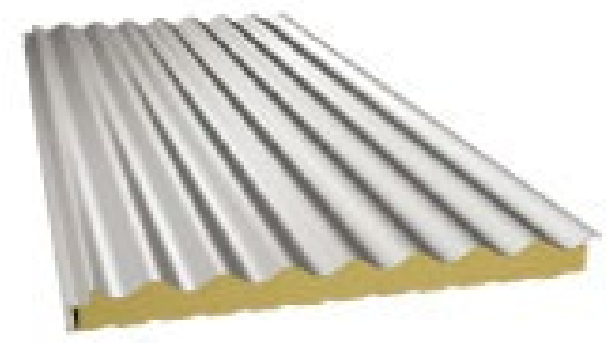
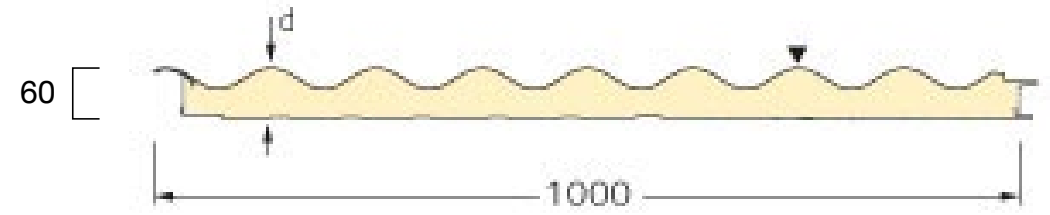


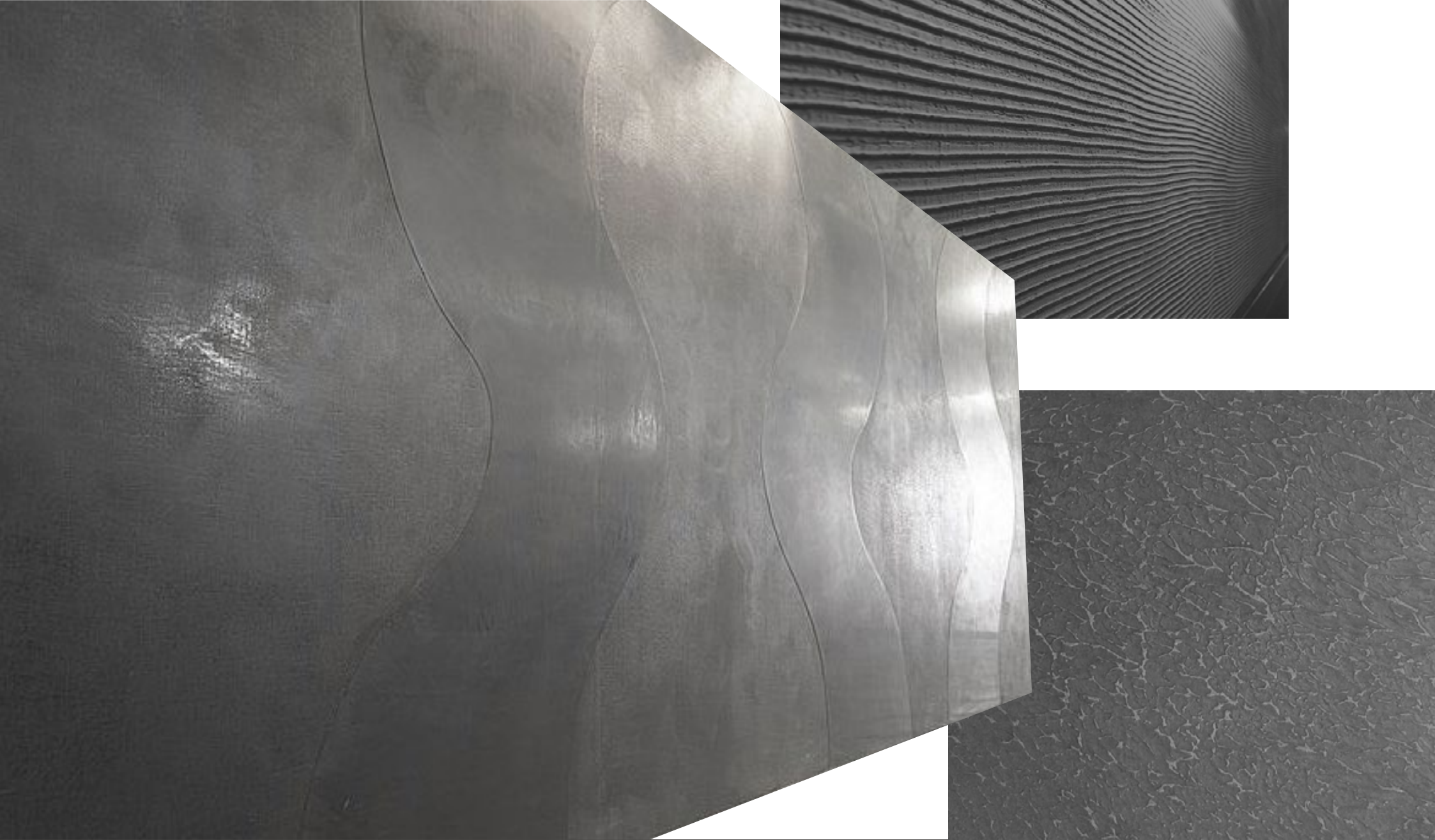
materiali : rivestimento pareti

lamiera grecata I tetto  
esempio tipo



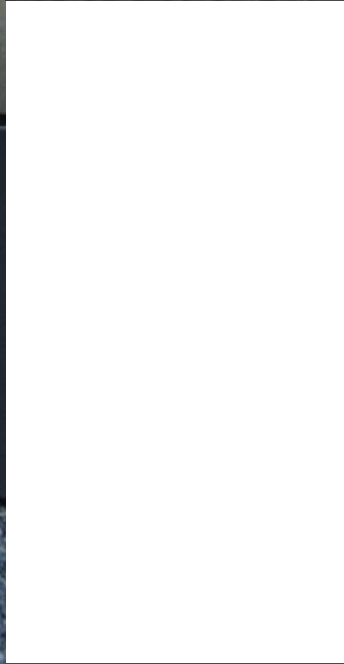
lamiera grecata I pareti  
esempio tipo





esempi di finitura intonaco





dettagli



impianto : valveny monte



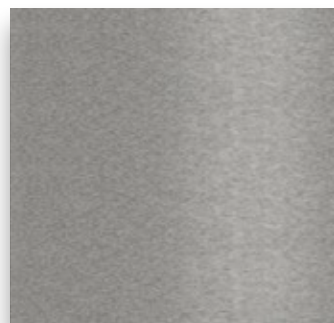
impianto : peindent monte



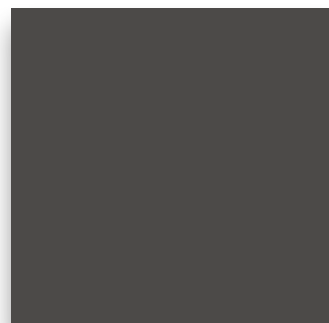
val veny



val veny



**grigio medio ferro-  
micaceo riferimento  
ral 9007**



**grigio antracite  
riferimento ral 7010**